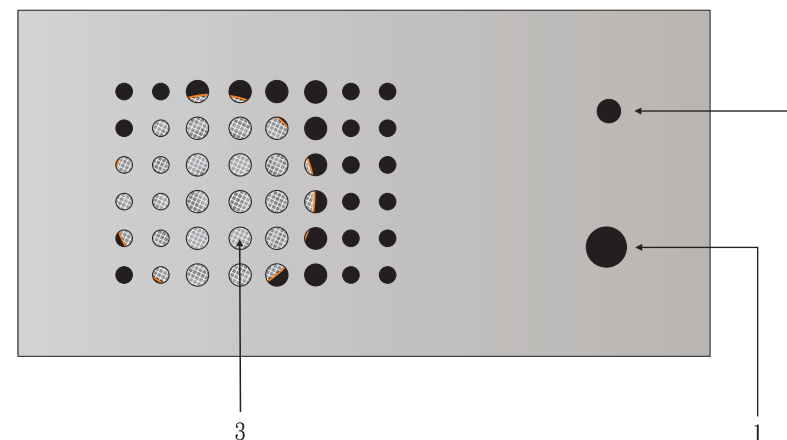


Wiring diagram

MEM-IM01

TALKING AMPLIFIER MODULE

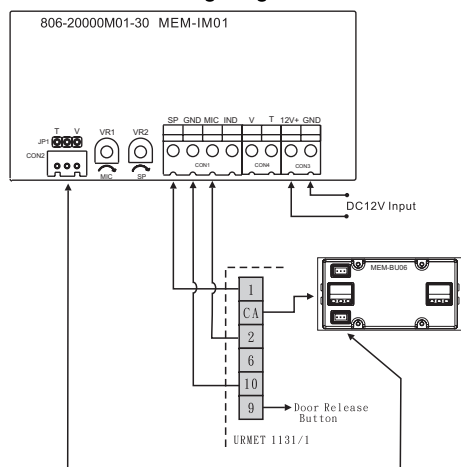


1. Power / door release indicator
connect the power and close door, the light is green:
press the release door key, the light turns
orange. (be connected to e-lock output terminal)
2. Capacitor microphone
3. Speaker

Specifications

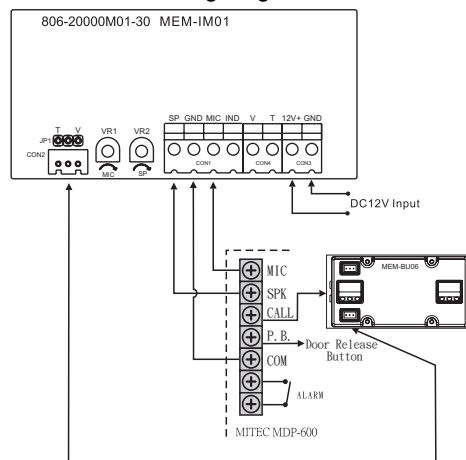
Power input	: DC12V
Built in speaker	: 8Ω/1W
Microphone input	: Capacitor microphone
Calling signal	: DC12V/Tone Signal
Size	: 100(W)x50(H)x32(D)mm

Match URMET1131/1 intercom wiring diagram



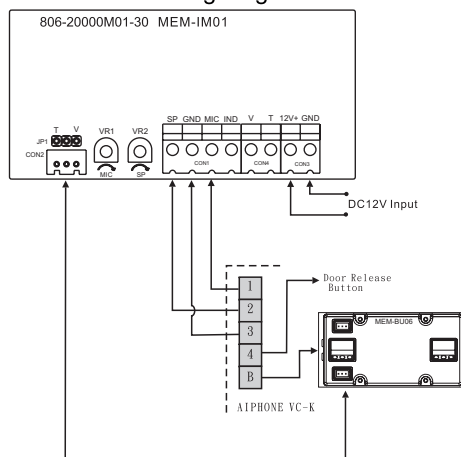
- Note:
1. Set the doorbell signal selection jumper JP1 to CALL-T end.
 2. If bright orange lights when the electric lock to open, IND terminal must be connected to the electric lock output V +.

Match MITEC MDP-600 intercom wiring diagram



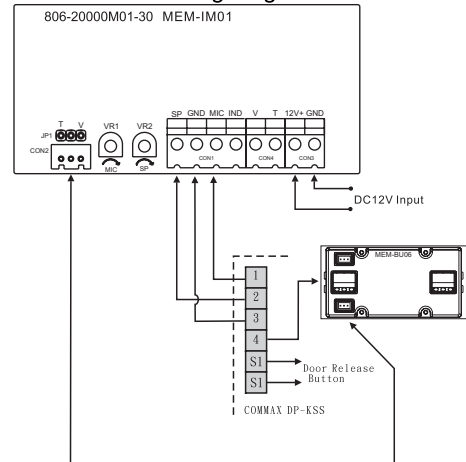
- Note:
1. Set the doorbell signal selection jumper Jp1 to CALL-V end (factory state).
 2. If bright orange lights when the electric lock to open, IND terminal must be connected to the electric lock output V +.

Match AIPHONE VC-K intercom wiring diagram

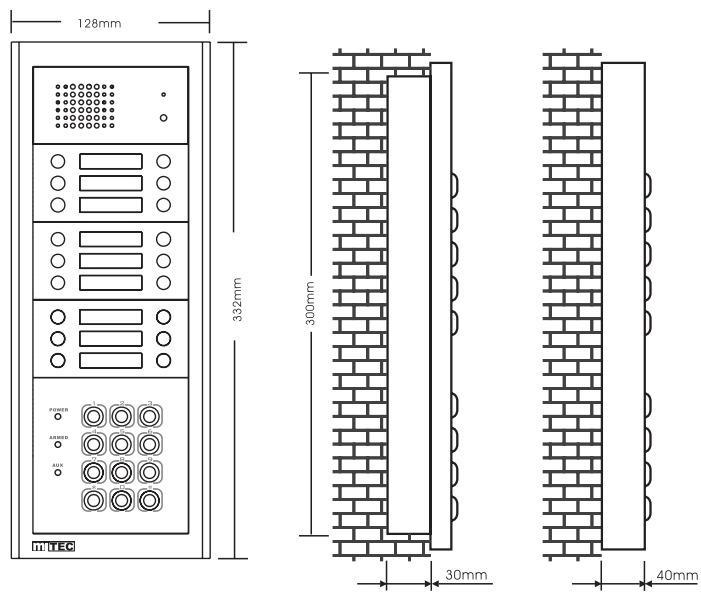
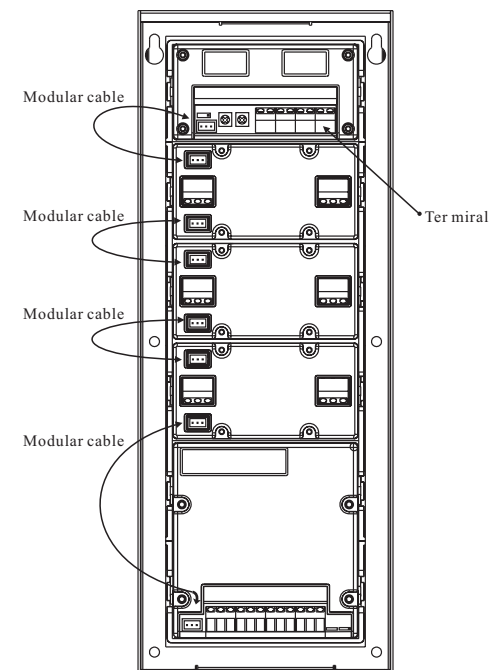
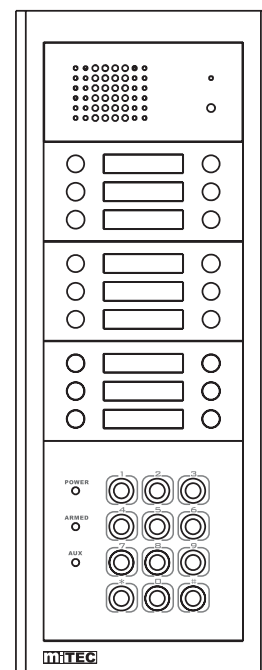
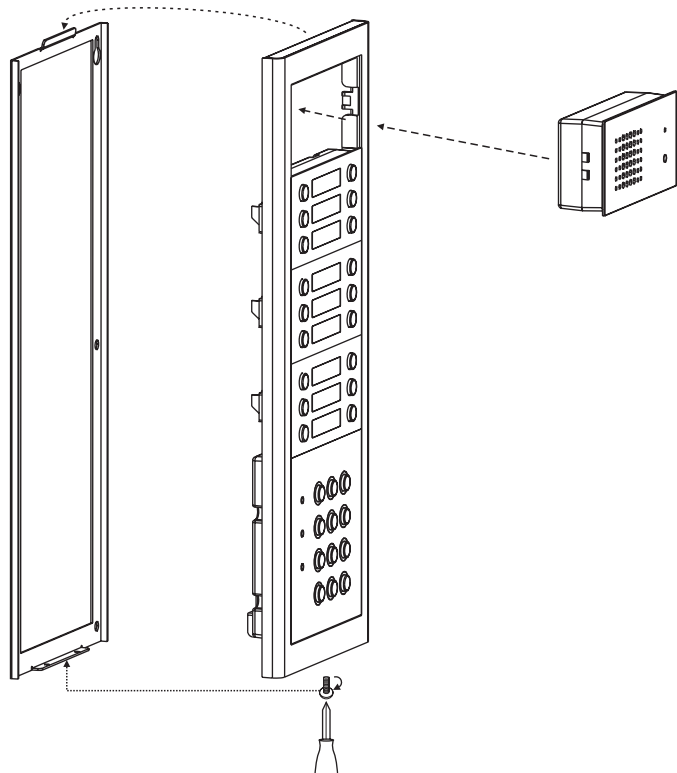


- Note:
1. Set the doorbell signal selection jumper JP1 to CALL-V end (factory state).
 2. If bright orange lights when the electric lock to open, IND terminal must be connected to the electric lock output V +.

Match COMMAX DP-KSS intercom wiring diagram



- Note:
1. Set doorbell signal selection jumper JP1 to CALL-V end (factory state).
 2. If bright orange lights when the electric lock to open, IND terminal must be connected to the electric lock output V +.



FOR MITEC MDP-600

